



FLUO900 – Life Science Fluorescence Microscope

Binocular / Trinocular

Download
Catalogue



COLO FLUO900 upright fluorescence microscope can be widely used in medical research, biological science, pharmacy and other disciplines for basic theoretical research and clinical diagnosis. It is also widely used in industry, agriculture, animal husbandry, criminal investigation, forensic identification, environmental protection engineering, preventive medicine and other fields.

Excellent UCIS Infinity colour correction optical system independently of the system with high numerical aperture objective lens. The optical performance is improved and the function expansion has great significance.

Humanized mechanical design, compact structure, overall die-casting of the fuselage, more stable and reliable.

Perfect knot together a phase contrast, fluorescence, simple polarizing, digital camera and other functions, higher efficiency. Excellent weak fluorescence imaging, fluorescence switch push-pull manner, with B, a plurality of fluorescent G, U, V and the like excitation, observed DAPI, FITC-, TRITC, Alexa Fluor series, Cy3-based columns and other common fluorescent dyes, the CTC Detection, FRET, cellular immunity and other fields are widely used.



Upright Microscope



Phase Contrast



Nosepiece

Revolving and reversed nosepiece for 5 objectives



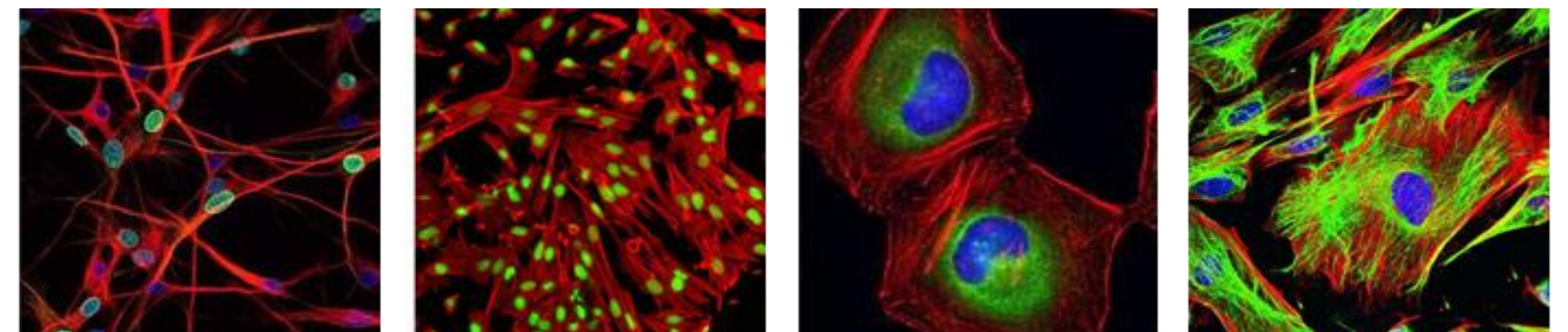
Objectives

Infinity Plan Achromatic Objectives



Light source

The innovative design offer larger apertures, allowing the optical system of the microscope to produce images at higher resolutions



TECHNICAL SPECIFICATIONS

- Kohler Illumination

EYEPIECE(S)

- Extended EWF 10x/20 mm eyepieces, Ø 30 mm tubes.
- Eyepieces can be secured to the tubes

HEADS

- Binocular Siedentopf type heads are with 30° inclined tubes, interpupillary distance from 52 to 75 mm and is equipped with diopter adjustment(s). (48-75 is Optional)
- The trinocular head comes with a Ø 30 mm photo port.
- An optional ergonomic titling head (0:100 50:50) are also available (Optional)
- Digital viewing head inclined at 30°, 5M pixels, support Wifi (infinite) (Optional)
- Trinocular head with 9.7" LED screen, integrated with digital camera 5M pixels, Android OS, HDMI, USB, SD Card, Wi-Fi, Mouse Control (Optional)

NOSEPIECE

- Revolving and reversed nosepiece for 5 objectives (with 4 objectives is optional)

OBJECTIVES

- All optics are anti-fungus treated and anti-reflection coated for maximum light throughput
- Infinity achromatic objectives 4x/0.13 10x/0.30 20x/0.40 S40x/0.70 S100x/1.25 oil (Optional)
- Infinity E-Plan objectives 4x/0.10 10x/0.25 20x/0.40 S40x/0.65 S100x/1.25 oil (Optional)
- Infinity plan objectives 4x/0.10 10x/0.25 S40x/0.65 S100x/1.25 oil (Standard) S60x/ 0.80 (Optional)

STAGE

- 156 x 138 mm ceramic stage with integrated 76 x 54 mm mechanical stage protects with a very tough ceramic surface, against marks and scratches. The surface also ensures stray light not to be reflected from the stage into the objective (Optional)
- 185 x 177 mm reckless stage equipped with double slide holder and integrated 75 x 50 mm reckless mechanical stage. It has no protruding parts, enabling more smooth movements and is safer

CONDENSER FOR DARK FIELD

- Dark field condenser (dry) usually for 40-600X magnification.
- Dark field condenser (oil), if you want to observe 600X and more, this condenser is necessary

FOCUSING

- Coaxial coarse and fine adjustments, 100 graduations, 1µm per graduation, 100µm per rotation, total travel approximately 14 mm.
- Supplied with an adjustable rack stop to prevent damage to sample and objectives.
- The coarse adjustments are equipped with friction control

EPI ILLUMINATION MERCURY/LED(optional)

- Epi-illumination 100W HBO Ultra Hi-voltage Spherical Mercury Lamp
- LED Light source, with wavelength controller
- The innovative design offer larger apertures, allowing the optical system of the microscope to produce images at higher resolutions, very close to the theoretical diffraction limit of the optics.
- High brightness energy-saving LED illumination for long life, brightness adjustable
- The illumination on models with IOS plan and plan phase infinity corrected system provides high contrast and a maximum achievable resolving power of the optics. Also available for other models as an option

FILTERS

- G, R, UV and other fluorescence excitation, observed DAPI, FITC-, TRITC, Alexa Fluor series, Cy3 series of common fluorescent dyes in CTC Detection, FRET, cellular immunity and other fields are widely used.
- Blue Excitation Cube, Excitation: BP460~490, Dichroic Mirror: DM500, Barrier Filter: BA520 (Optional)
- Green Excitation Cube, Excitation: BP510~550, Dichroic Mirror: DM570, Barrier Filter: BA590 (Optional)
- Chroma Red Excitation Filter Sets (Optional)

POWER SUPPLIER

- NFP-1, AC Input 220V/ 110V (Interchangeable), Digital Display and Timer

PACKAGING

- Supplied with power cord, dust cover, a spare fuse, user manual and 4 ml immersion oil for models with S100x objective.
- All packed in good quality foam and carton.

MODEL	FLUO900B	FLUO900T	FLUO900LED
Binocular head, Interpupillary distance 52-75mm	●	○	●
Trinocular head, Interpupillary distance 52-75mm (20:80)	○	○	○
Trinocular head, Interpupillary distance 48-75mm (50:50)	○	○	○
Trinocular head, Interpupillary distance 48-75mm (100)	○	○	○
High eye-point plan eyepiece WF10X/20	●●	●●	●●
High eye-point plan eyepiece WF10X/22	○○	○○	○○
Plan eyepiece WF16X/13	○○	○○	○○
High eye-point plan eyepiece WF10X/18 (Pointer)	○	○	○
High eye-point plan eyepiece WF10X/20 (Pointer)	○	○	○
Reticule Eyepiece, Cross WF10X/18	○	○	○
Infinity Achromatic Objective 4X N.A.0.13	○	○	○
Infinity Achromatic Objective 10X N.A. 0.30	○	○	○
Infinity Achromatic Objective 40X(S) N.A.0.70	○	○	○
Infinity Achromatic Objective 100X(S)/(Oil) N.A. 1.25	○	○	○
Infinity Plan Achromatic Objective 2X	○	○	○
Infinity Plan Achromatic Objective 4X	●	●	●
Infinity Plan Achromatic Objective 10X	●	●	●
Infinity Plan Achromatic Objective 40X (S)	●	●	●
Infinity Plan Achromatic Objective 60X (S)	○	○	○
Infinity Plan Achromatic Objective 100X (S) (OIL)	●	●	●
Mechanical Stage, right handed, 142X135mm, movement range 76X52mm with slide holder up to 2pcs	●	●	●
Mechanical Stage, Ceramic, right handed, 156X138mm, movement range 76X54mm with slide holder	○	○	○
Motorized Microscope stage	○	○	○
Heating Microscope stage	○	○	○
Reckless Stage, right handed, 185X177mm, movement range 75X50mm	○	○	○
Quadruple Nosepiece, inward facing	●	●	●
Quintuple Nosepiece, inward facing	○	○	○

MODDEL	FLUO900B	FLUO900T	FLUO900LED
Abbe Condenser 0,9/1,25	○	○	○
Dark field slide	○	○	○
Dark field condenser oil	○	○	
Dark field condenser dry	●	●	●
B Excitation Filter	●	●	●
G Excitation Filter	●	●	●
V Excitation Filter	○	○	○
R Excitation Filter	○	○	○
UV Excitation Filter	○	○	○
Kohler Illuminator (No field diaphragm)	○	○	○
Kohler Illuminator (With field diaphragm)	●	●	●
100W DC Mercury Lamp Light Box with lamp	●	●	○
100W DC Mercury Lamp Power Box	●	●	○
6V 20W Tungsten-Halogen Lamps	●	●	●
6V 30W Tungsten-Halogen Lamps	○	○	○
LED Source for fluorescence with controller	○	○	●
3W LED Electric Device	○	○	●
0,5X C-Mount	○	○	○
1X C-Mount	○	○	○
0,65X C-Mount	○	○	○
Adapter for Nikon DSLR	○	○	○
Adapter for Cannon DSLR	○	○	○
Protection against unauthorized eyepiece and lens disassembly	○○	○○	○○
Blue Filter (φ32)	●	●	●
Green Filter (φ32)	○	○	○
Yellow Filter (φ32)	○	○	○
Ground Glass (φ32)	○	○	○
250V/3.15A Φ5X20 fuse	●●	●●	●●
6V 30W Tungsten-Halogen lamp	○	○	○
6V 20W Tungsten-Halogen lamp	○	○	○
3W Led Lamp	○	○	●
Immersion Oil	●	●	●
Dust Cover	●	●	●
φ2mm Allen screwdriver	●	●	●
Instruction manual	●	●	●
Power Cord	●	●	●

Please note

If this Microscope does not match the specific needs of your application, or some options are not listed for sale, please feel free to contact us. Our manufacturing engineers will come up with technical solutions to meet your needs. We reserve the right to change technical specifications at any time.